
The logo for Link Up Markets features the word "Link" in a large, bold, blue sans-serif font. A light blue horizontal line starts under the "L" and extends to the right, ending in a curved shape that frames the word "Up". The word "Up" is in a smaller, grey sans-serif font, positioned above the "M" of "Markets". The word "Markets" is in the same large, bold, blue sans-serif font as "Link". Below the main text, the phrase "DIRECT CROSS-BORDER ACCESS" is written in a smaller, blue, all-caps sans-serif font.

Link^{Up} Markets
DIRECT CROSS-BORDER ACCESS

Sibos 2008 - Vienna

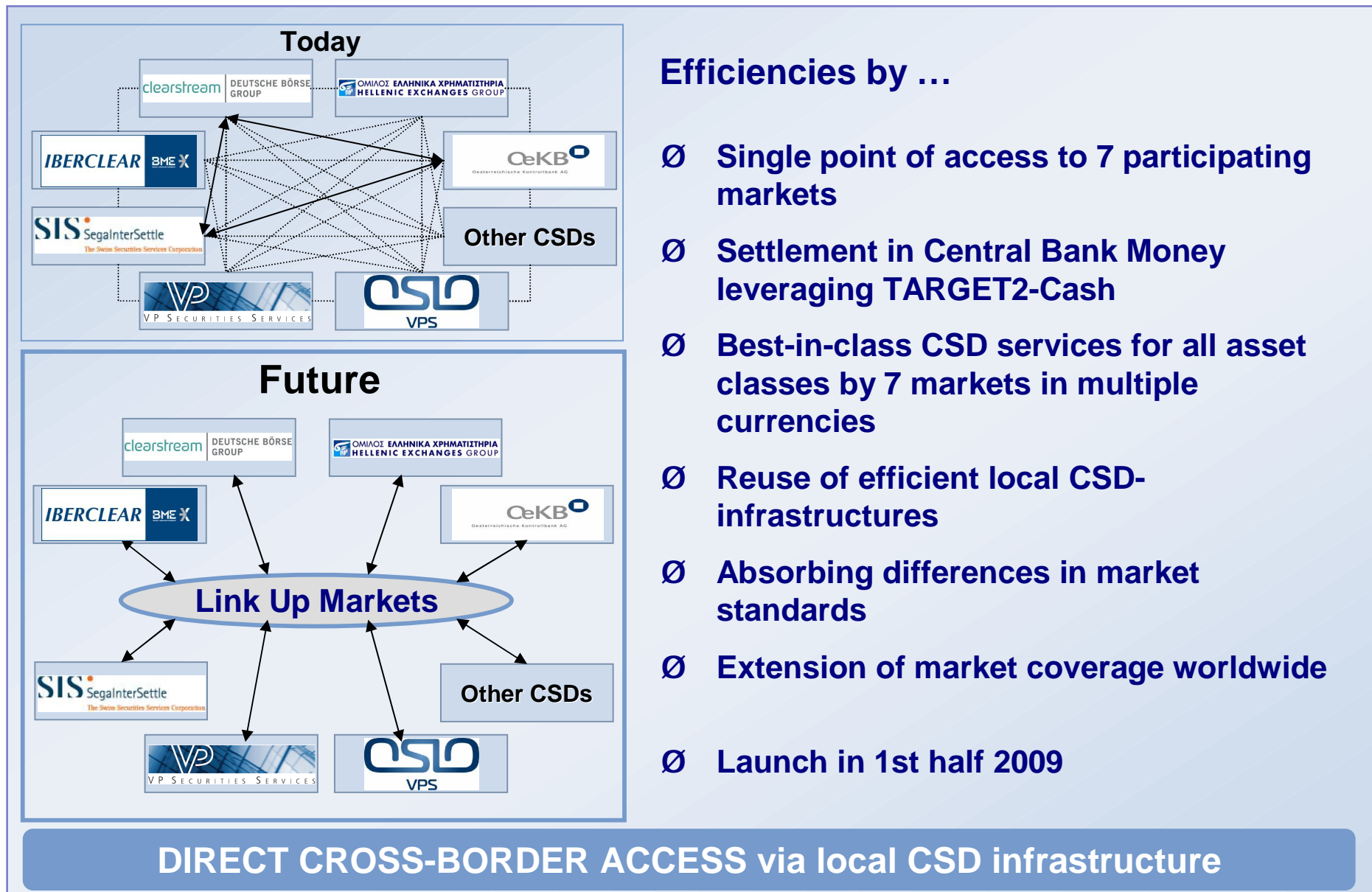
Link Up Markets – joint venture partners

Seven leading European CSDs



Almost 50 % market share in settlement volumes and 45 % in asset holdings

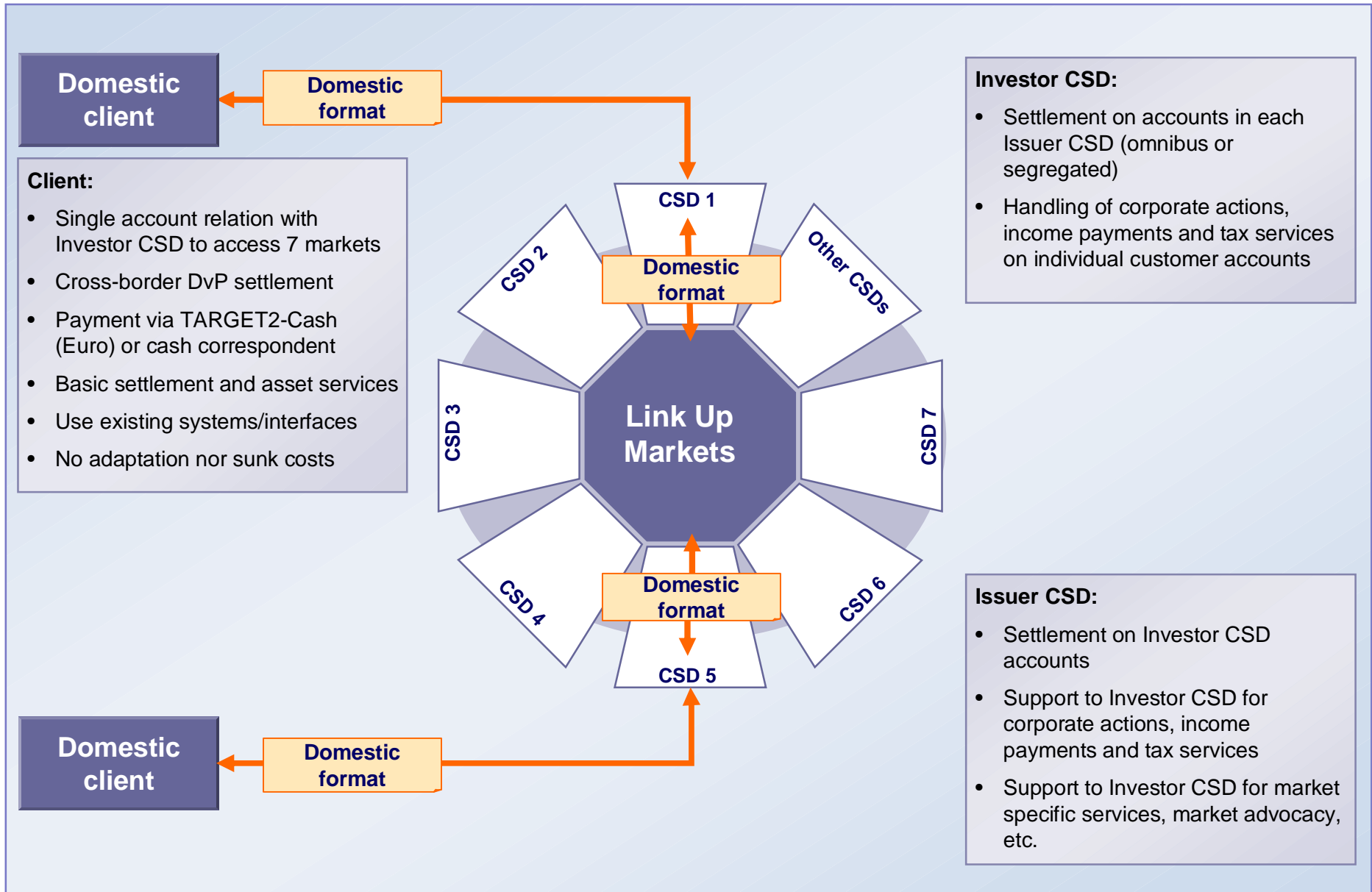
Link Up Markets – efficiency by interoperability



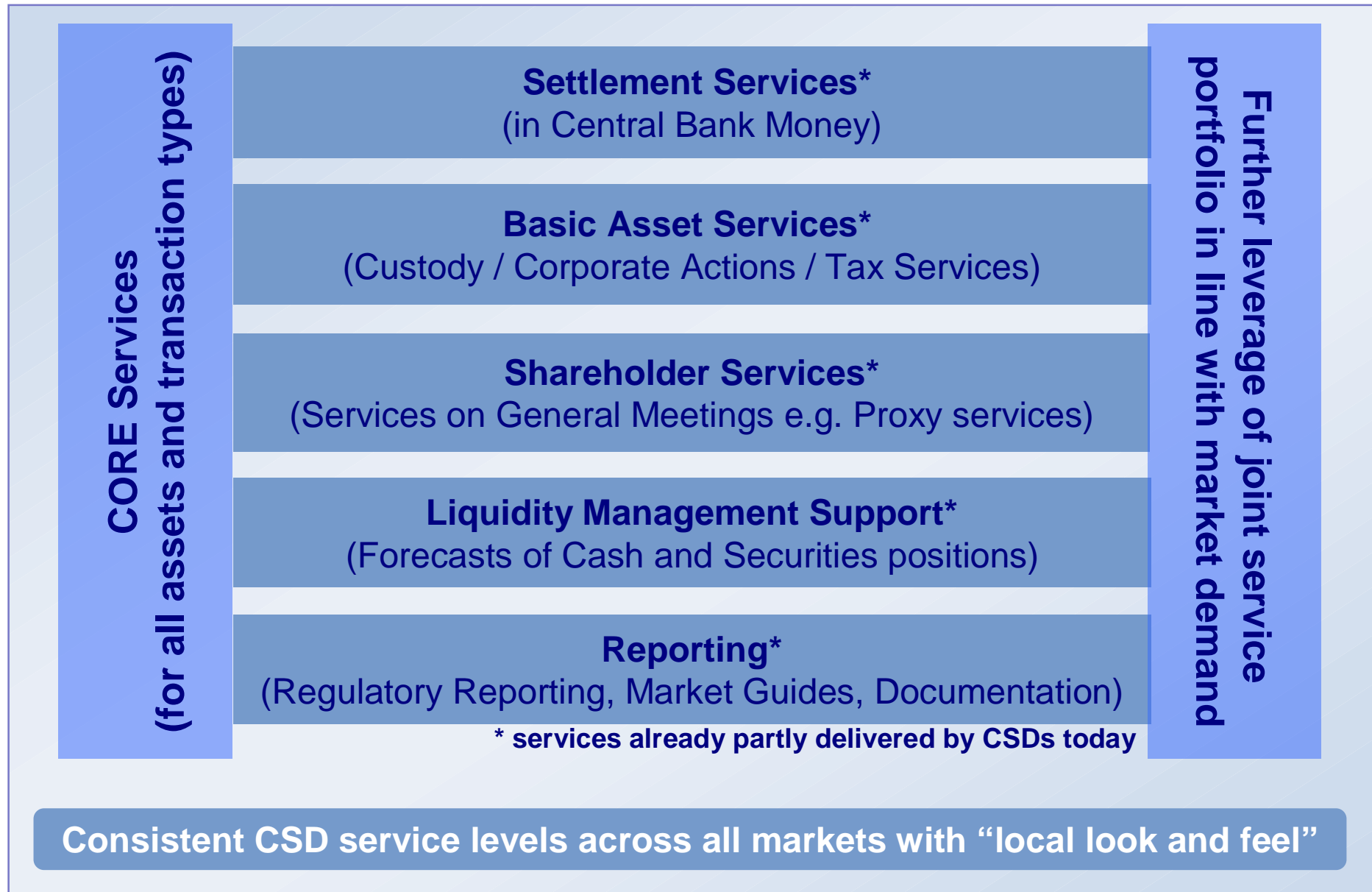
Efficiencies by ...

- ∅ Single point of access to 7 participating markets
- ∅ Settlement in Central Bank Money leveraging TARGET2-Cash
- ∅ Best-in-class CSD services for all asset classes by 7 markets in multiple currencies
- ∅ Reuse of efficient local CSD-infrastructures
- ∅ Absorbing differences in market standards
- ∅ Extension of market coverage worldwide
- ∅ Launch in 1st half 2009

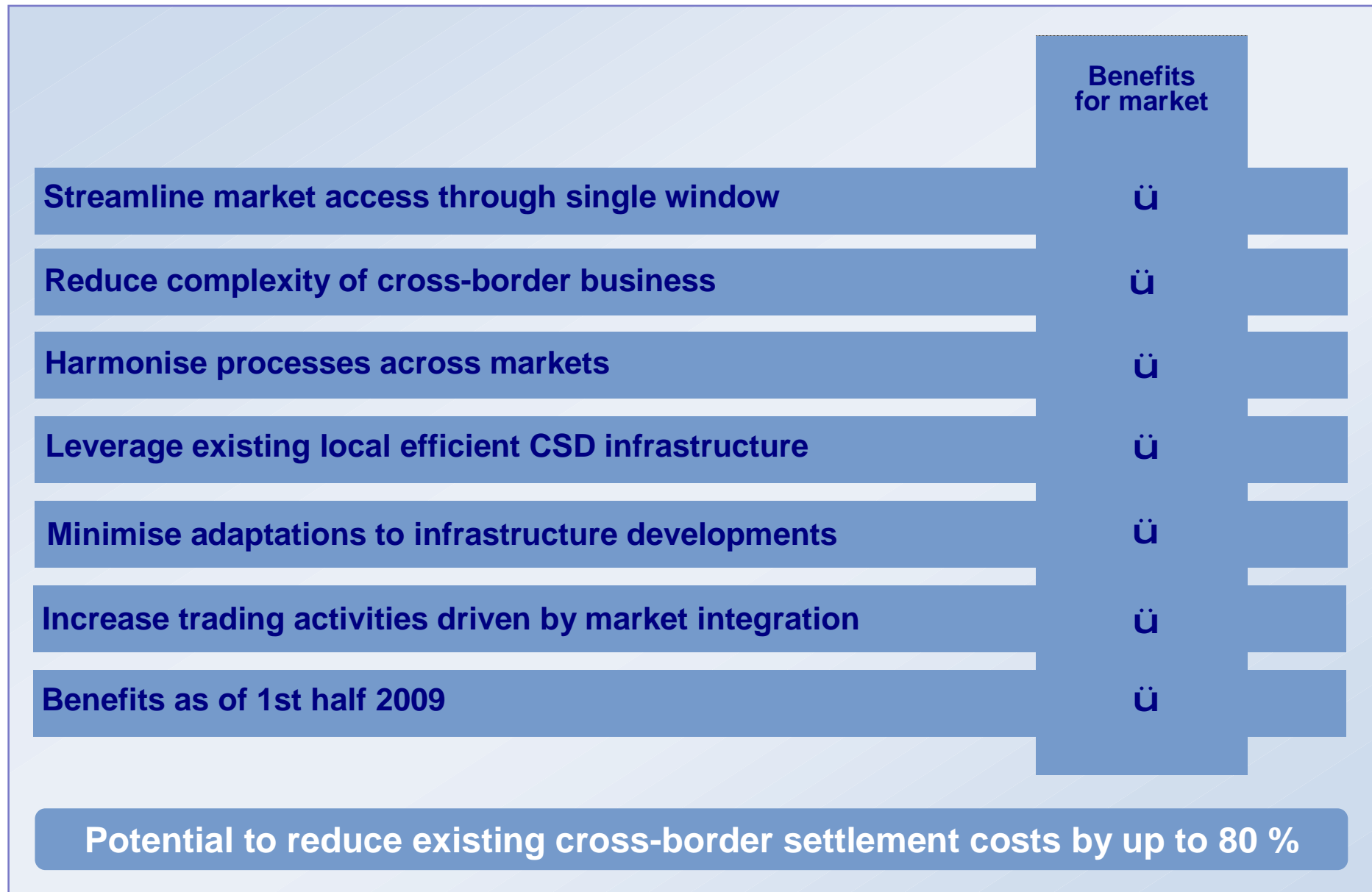
Link Up Markets – CSD client example



Link Up Markets - service deliverables by partner CSDs in 2009



Link Up Markets - benefits for the market



Link Up Markets – Contacts

Clearstream Banking AG Frankfurt

Relationship Management Germany

+49-69 211 1 37 50

Hellenic Exchanges S.A.

Konstantinos Tantis

+30-210 3366586

c.tantis@helex.gr

IBERCLEAR

Elena Carnicero

+34-91 709 5272

ecarnicero@iberclear.es

Oesterreichische Kontrollbank AG

Peter Felsinger

+43-1 531 27 2463

peter.felsinger@oekb.at

SIS SegalInterSettle AG

Fabrizio Pescosolido

+41-44 288 4633

fabrizio.pescosolido@sisclear.com

VP Securities Services

Sales Department

+45-4358 8888

sales@vp.dk

VPS

Kjell-Ivar Moe

+47-22 63 53 30

kim@vps.no

Link Up Markets

+34-91 709 52 07

info@linkupmarkets.com